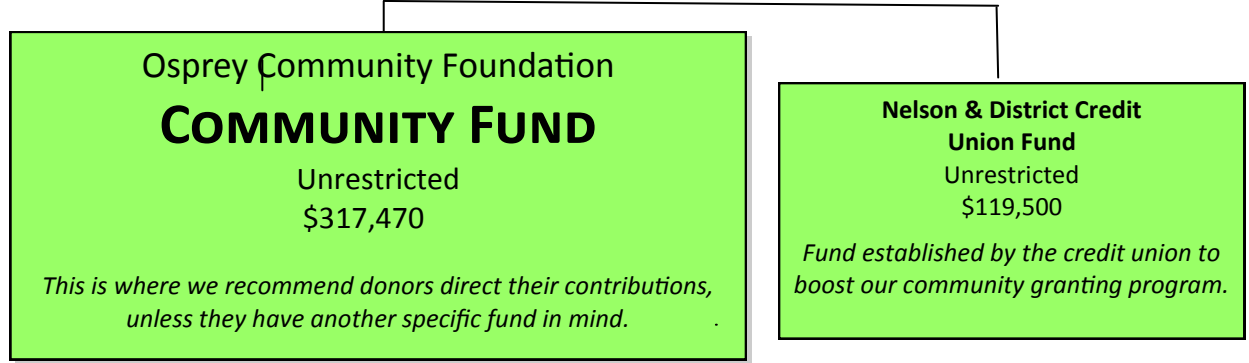


Osprey Community Foundation Funds as of December 2016



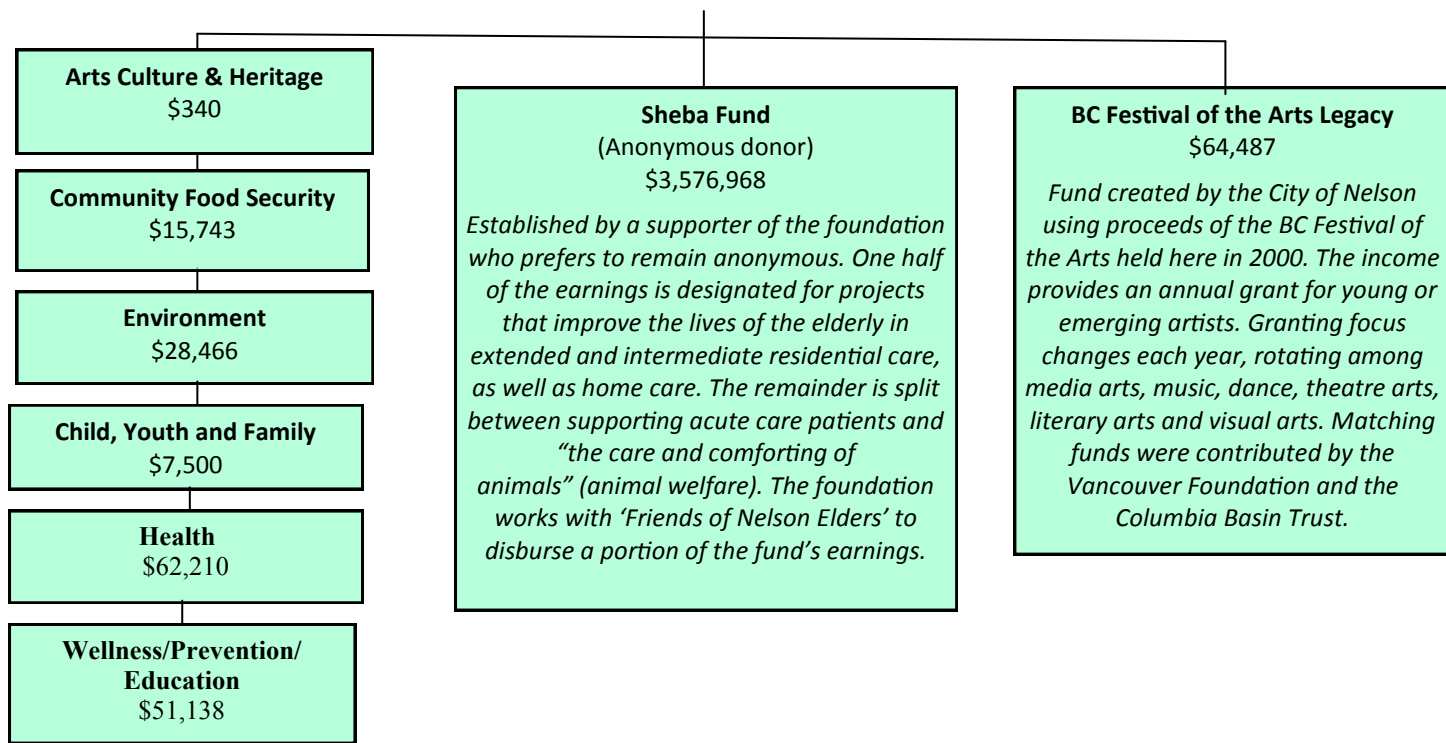
COMMUNITY Funds

Undesignated funds used for broad community granting, with flexibility to meet ever-changing community needs.



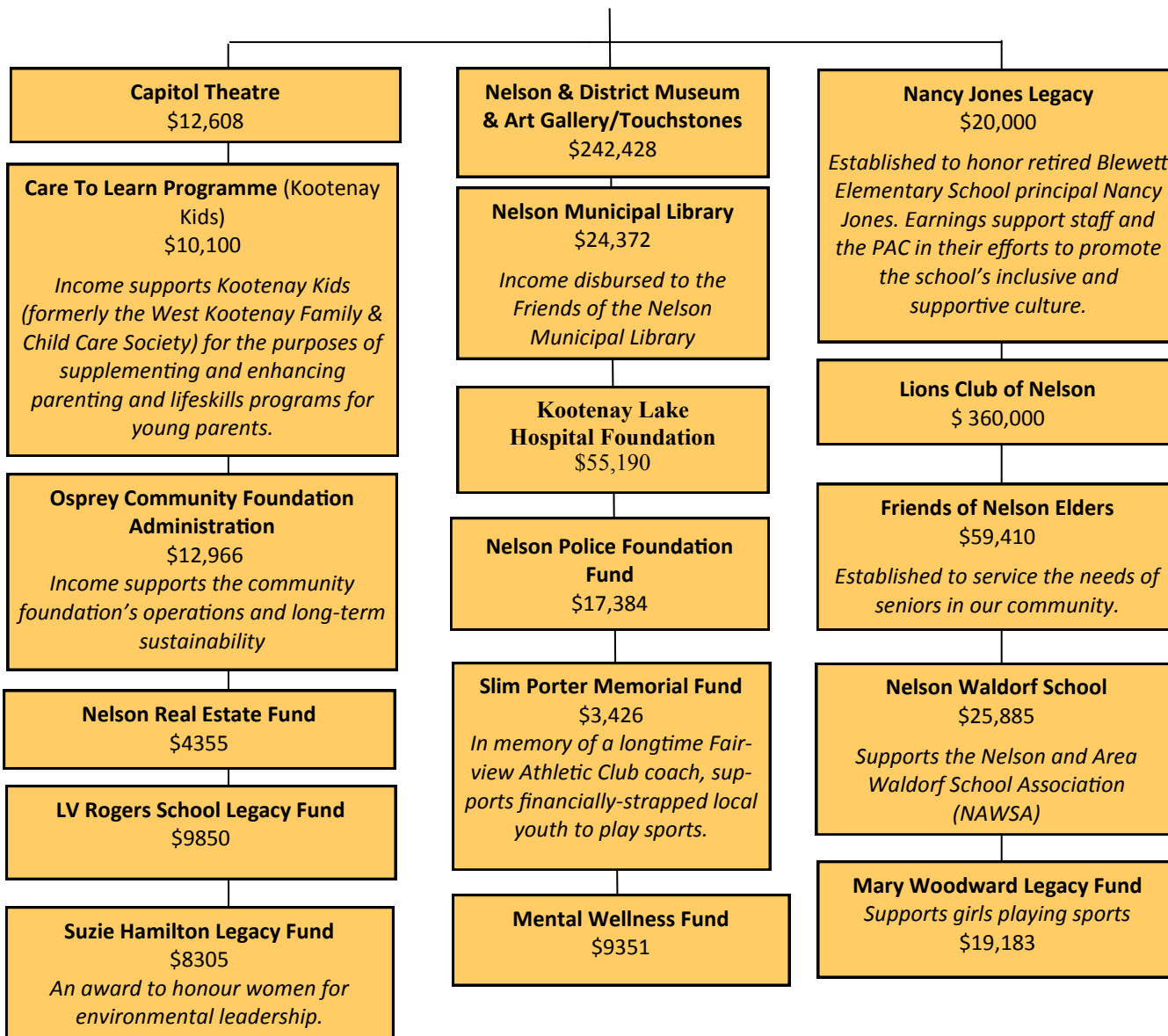
FIELD OF INTEREST Funds

These funds are also used for community granting, but are targeted at meeting needs within particular sectors of the community.



DESIGNATED Funds

Many donors or local charities have established endowment funds within the community foundation. Earnings from these funds flow back to designated organizations or causes.

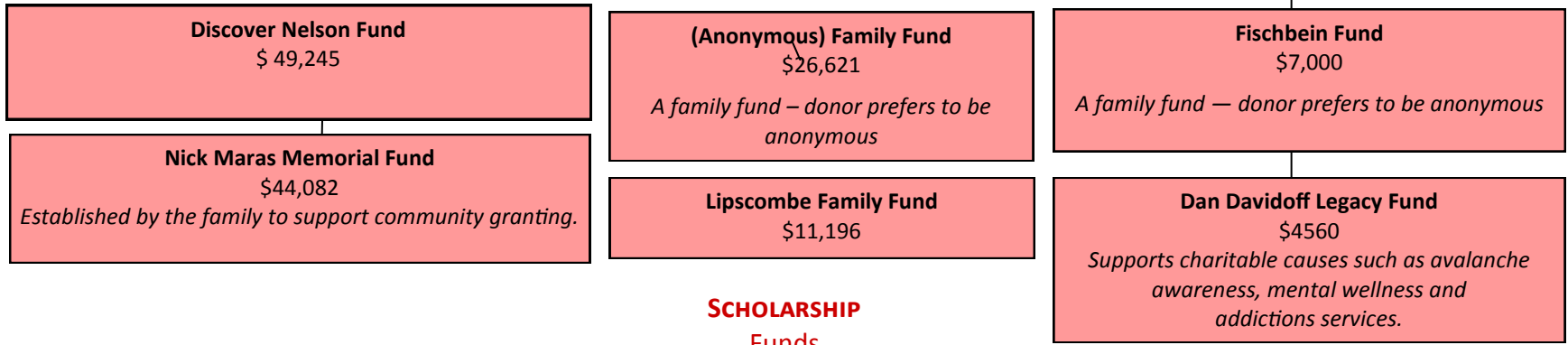


Osprey Community Foundation Funds as of December 2016

DONOR-ADVISED

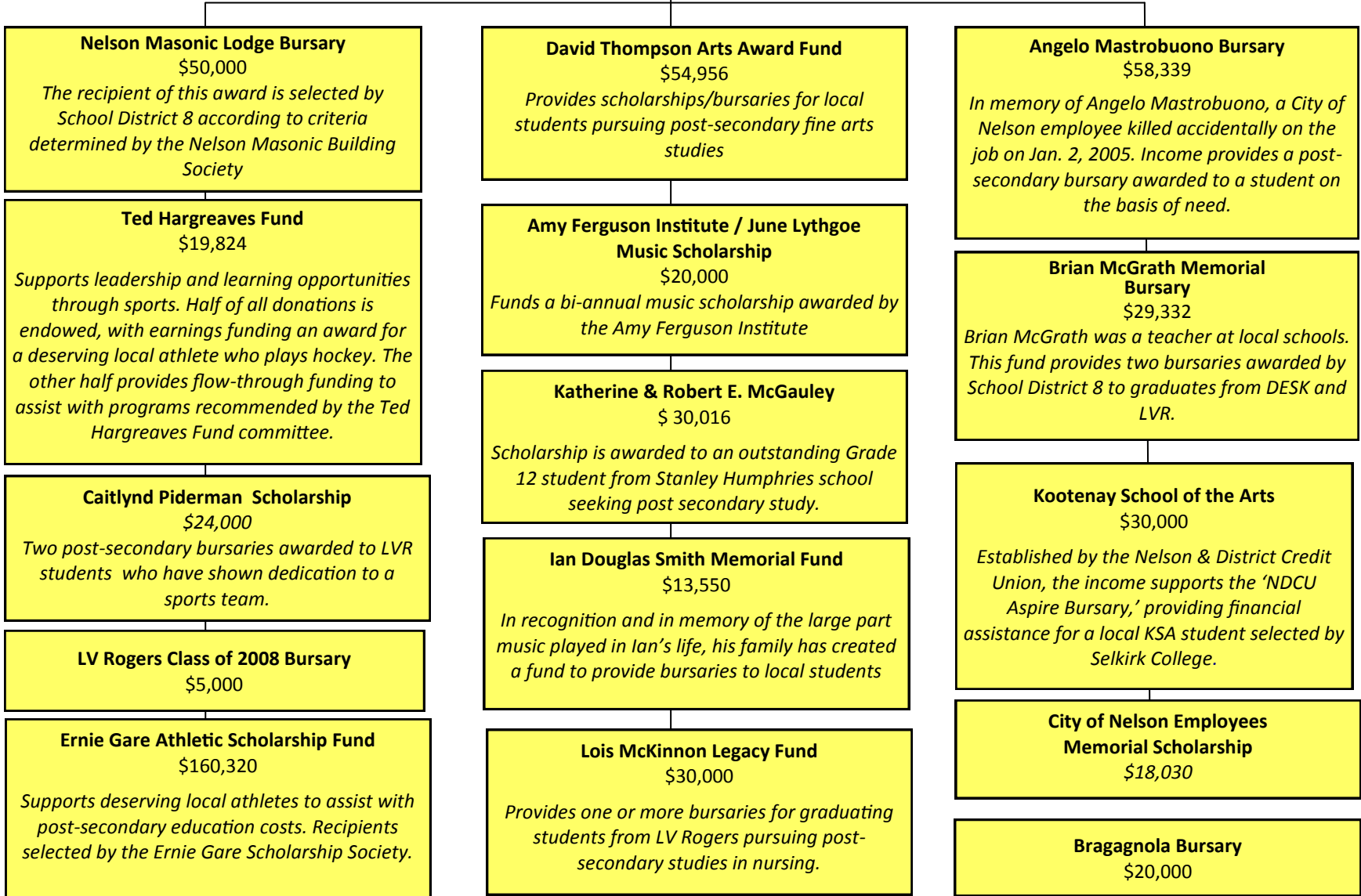
Funds

Donors (or an advisory committee named by the donor) have ongoing involvement in how the money in these funds is used.



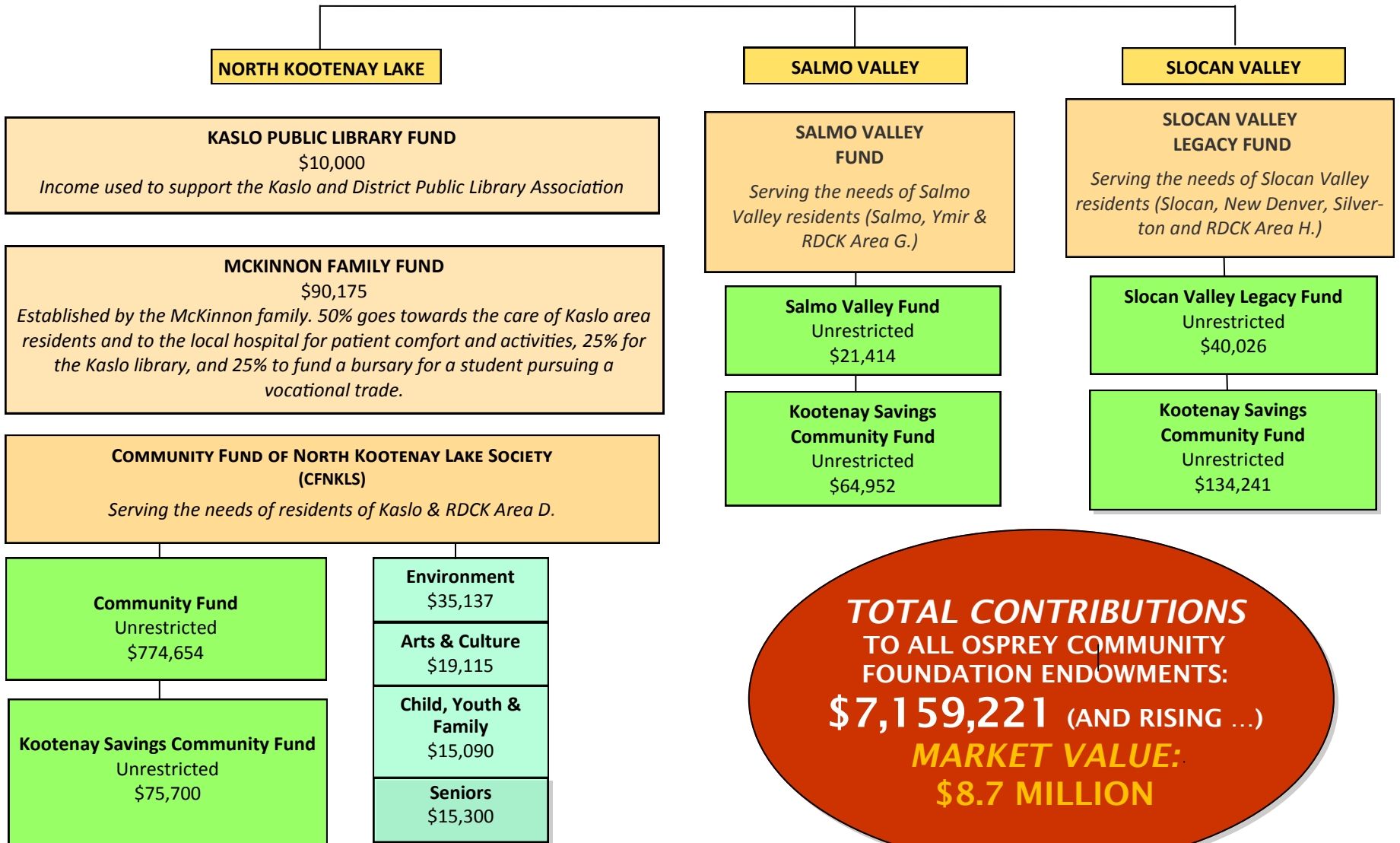
SCHOLARSHIP

Funds



GEOGRAPHIC REGIONAL FUNDS

Designated funds established under the Osprey Community Foundation umbrella to serve the needs of neighbouring communities



TOTAL CONTRIBUTIONS TO ALL OSPREY COMMUNITY FOUNDATION ENDOWMENTS:
\$7,159,221 (AND RISING ...)
MARKET VALUE:
\$8.7 MILLION